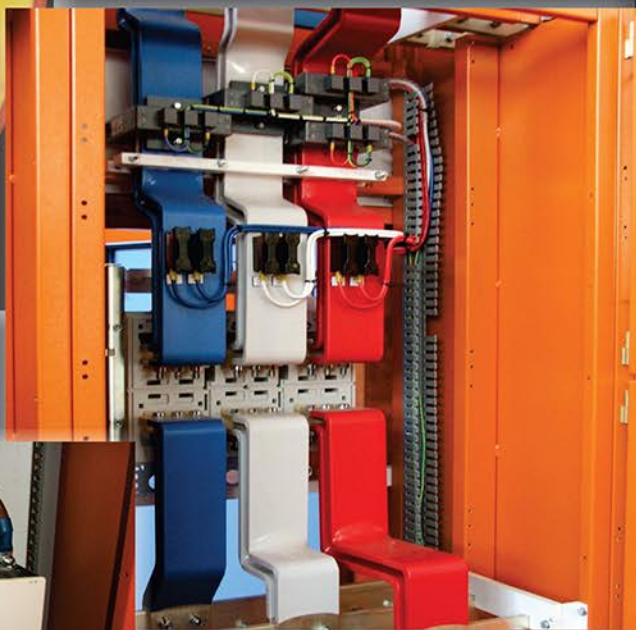


# AIRSHRINK



# Airshrink

## AS-EG



### Technical Data

Properties	Test Methods	Typical Values
Tensile (MPa)	IEC 60811	> 14
Elongation (%)	IEC 60811	> 250
Heat Ageing: Tensile (MPa) : Elongation (%)	IEC 60811 (100° C x 168 hrs)	> 12 > 250
Heat Shock (150°C x 1hrs)	IEC 60811	No Cracking
Cold Elongation – 15°C	ASTM D 2671	No Cracking
Mass Loss (100°C x 168) mg/cm <sup>2</sup>	IEC 60811	< 1.5
Limiting Oxygen Index (%)	IEC 60811	> 27 min
Hot Deformation (95°C x 1hr) %	IEC 60811	< 50
Dielectric Strength (kV/mm)	ASTM D 2671	> 20
Volume Resistivity (Ω.cm)	ASTM D 257	10 <sup>13</sup>



Dimensions: See overleaf

### Description

**AS-EG** is an electrical grade vinyl Airshrink sleeving. AS-EG requires no heat and shrinks when exposed to air. The product is supplied in airtight containers. Shelf life is in excess of 12 months when stored correctly. Airshrink is an ideal alternative to heatshrink for large installations and applications where the use of heatguns or open flames is neither possible nor practical.

### Features

- Shrink Ratio max 1.5 : 1
- 15 minutes handling time
- Operating temperature - 35 to 80°C
- High chemical resistance
- Excellent electrical properties
- Flame retardant when recovered
- Colours - Standard colours
- Uniform shrinkage, even around bends

### Applications

- Insulation and colour coding of busbars and bustubes
- Covering of handles for electrical, aesthetic and functional requirements (eg lawn mowers, gym equipment etc.)
- Insulation and strain relief of heat sensitive electronic components
- Precut lengths for easy insulation and colour coding lugs



**Dimensions**

Product	Expanded ID (mm)	Recovered ID (mm)	Wall Thickness (mm)	( m ) Per Tin
AS0103	1.3	1.0	0.30	80
AS0155	2.0	1.5	0.50	80
AS0205	2.6	2.0	0.50	80
AS0255	3.3	2.5	0.50	80
AS0305	3.9	3.0	0.50	60
AS0405	5.2	4.0	0.50	60
AS0505	6.5	5.0	0.50	40
AS0607	7.8	6.0	0.75	40
AS0707	9.1	7.0	0.75	20
AS0807	10.4	8.0	0.75	20
AS0907	11.7	9.0	0.75	20
AS1007	13.0	10.0	0.75	20
AS1107	14.3	11.0	0.75	20
AS1210	15.6	12.0	1.00	20
AS1410	18.2	14.0	1.00	20
AS1610	20.8	16.0	1.00	10
AS1605	20.8	16.0	0.50	10
AS1810	23.4	18.0	1.00	10
AS1805	23.4	18.0	0.50	10
AS1910	24.7	19.0	1.00	10
AS1905	24.7	19.0	0.50	10
AS2210	28.6	22.0	1.00	10
AS2510	32.5	25.0	1.00	10
AS2505	32.5	25.0	0.50	10
AS3010	39.0	30.0	1.00	10
AS3510	45.5	35.0	1.00	10
AS4010	52.0	40.0	1.00	5
AS4510	58.5	45.5	1.00	5
AS5010	65.0	50.0	1.00	5
AS6010	78.0	60.0	1.00	5
AS7010	91.0	70.0	1.00	5
AS8010	112.0	80.0	1.00	5